



GAT MONTHLY MEMBERSHIP PROGRESS REPORT

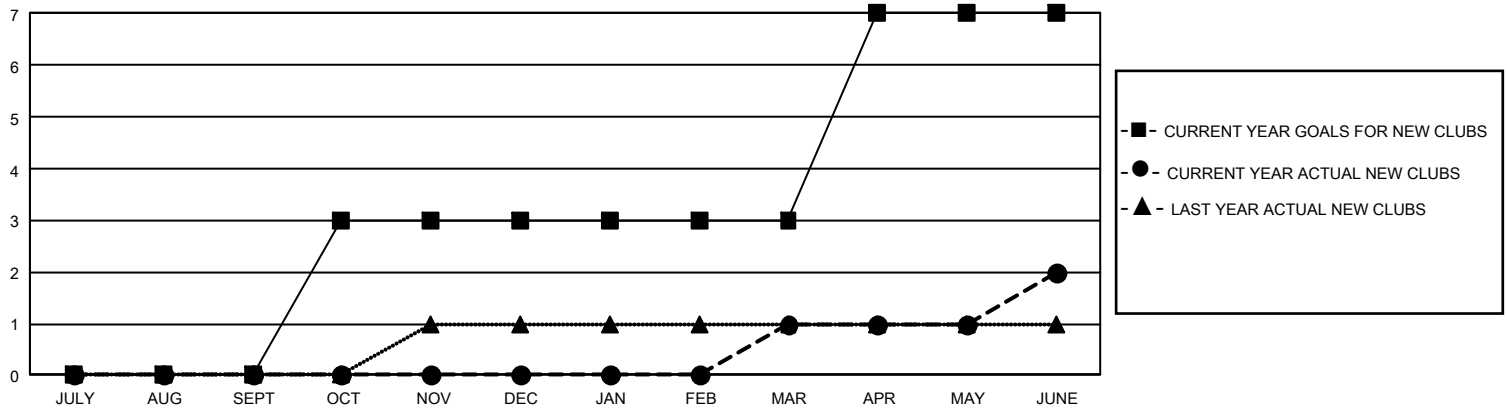
Results as of: 6/30/2025

GMT Constitutional Area 7, Group B

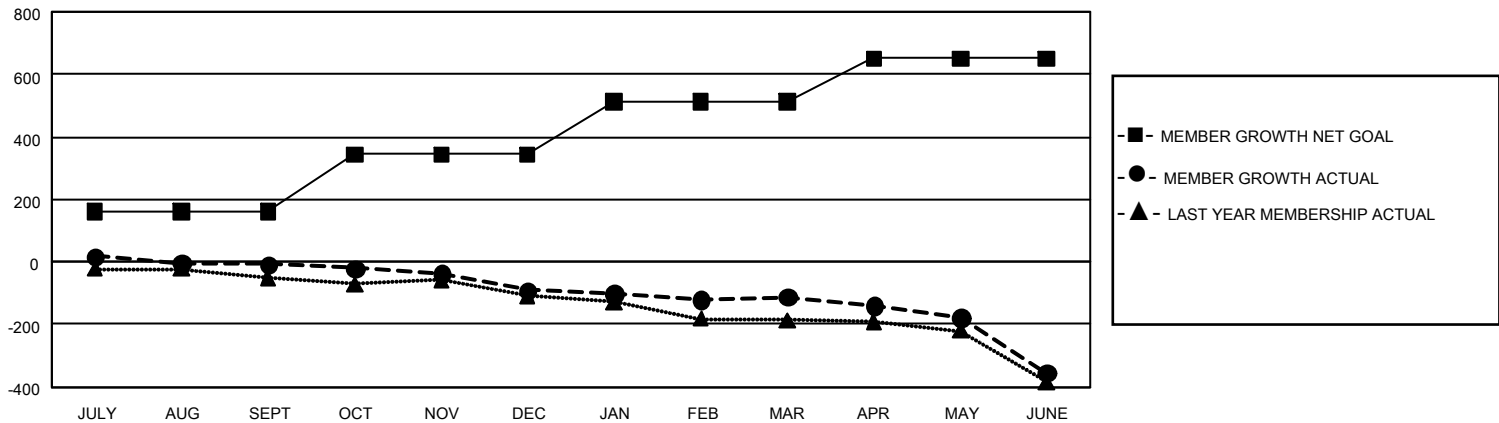
REPORT DOES NOT INCLUDE CLUBS IN UNDISTRICTED AREAS.

Clubs				Members			
RESULTS FOR 2024-2025				RESULTS FOR 2024-2025			
QUARTER	NEW CLUB GOAL	NEW CLUBS	DROPPED CLUBS	QUARTER	MEMBER GROWTH NET GOAL	MEMBER GROWTH ACTUAL	DROPPED MEMBERS ACTUAL (including transfers)
JULY/AUG/SEPT	0	0	7	JULY/AUG/SEPT	162	249	192
OCT/NOV/DEC	9	0	1	OCT/NOV/DEC	182	150	201
JAN/FEB/MAR	0	1	0	JAN/FEB/MAR	168	158	156
APR/MAY/JUNE	12	1	4	APR/MAY/JUNE	139	242	426

GOALS AND ACTUAL NEW CLUBS CUMULATIVE



GOALS AND ACTUAL MEMBERS CUMULATIVE



DROPPED CLUBS: 12

187 CLUBS OF 296 ADDED 1 OR MORE NEW MEMBERS

GENDER DISTRIBUTION

MALE	4,911 (66.56%)
FEMALE	2,465 (33.41%)
NON BINARY	2 (0.03%)
PREFER NOT TO ANSWER	0 (0.00%)

DROPPED MEMBERS

DECEASED	127
CLUB CANCELLED	30
OTHER	808
TOTAL	965

[CLICK HERE FOR CUMULATIVE MEMBERSHIP DATA](#)

TOTAL FAMILY UNIT MEMBERS 738

FAMILY MEMBERS PAYING HALF DUES 371